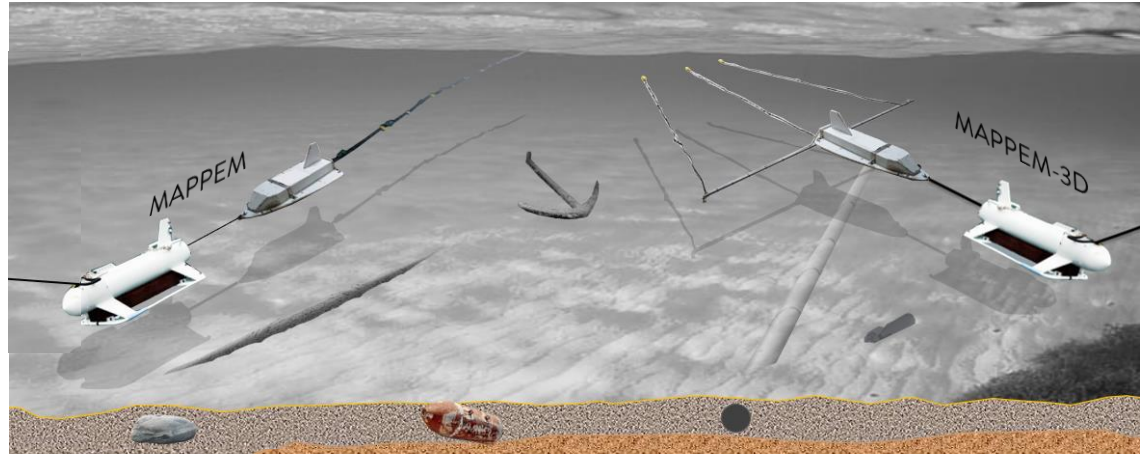


Our services

Detection of buried objects and obstructions.

Performing the complete workflow from acquisition to data processing and analysis.



Our advantages



- ✓ Pyrotechnic detection
- ✓ Detecting ferrous and non-ferrous objects
- ✓ High discrimination
- ✓ From very shallow water depths up to 100 m
- ✓ Easy deployment (small survey vessel, two operators)
- ✓ Real time supervision and quality check using in-house acquisition software
- ✓ Cost-effective



Applications

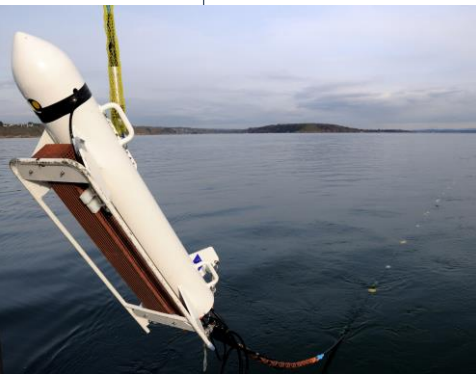
<p>DREDGING</p>	<p>MARINE RENEWABLE ENERGIES</p>	<p>PIPELINES & CABLES</p>
------------------------	---	--------------------------------------

<p>COASTAL AND PORT DEVELOPMENTS</p>	<p>OIL & GAS</p>
<p>UXO</p>	<p>DEFENSE</p>

Examples

- Detecting metallic debris in harbours
- Locating buried pipelines and cables
- Searching for wrecks (marine archeology)
- Locating ferrous and non-ferrous UXOs (LMB mines...)

Our technologies



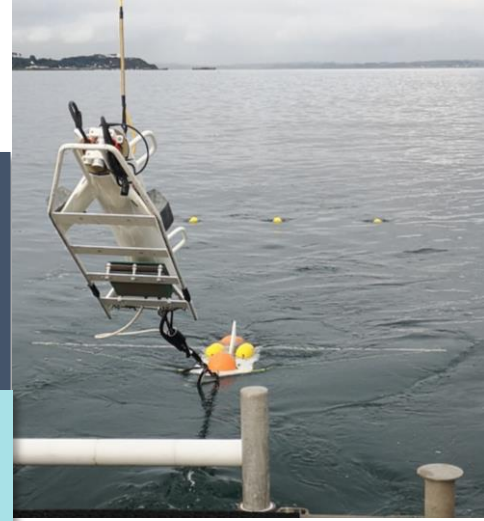
MAPPEM

System towed behind a vessel a few meters above the seafloor. Cable equipped with 20 receiving electrodes.

MAPPEM-3D

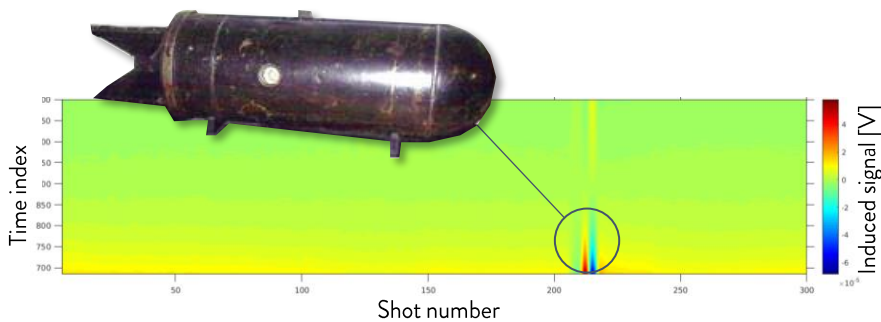
System towed behind a vessel a few meters above the seafloor. 5 m-swath. 3 cables equipped with 6 receiving electrodes each.

- Navigation and position sensors
- Main fish and secondary fish form the injection dipole (injected current ~60A)
- Specific data processing « BODIES » to highlight objects

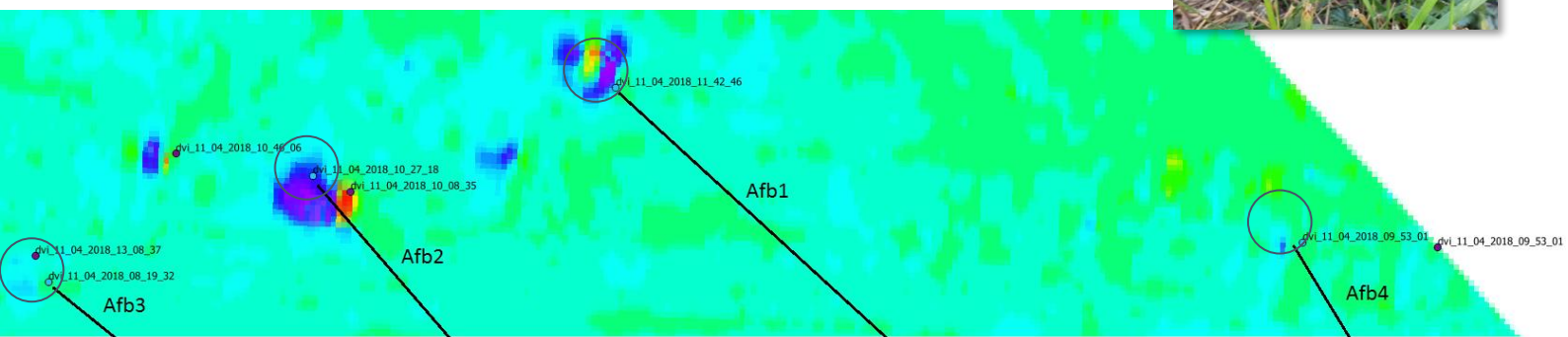
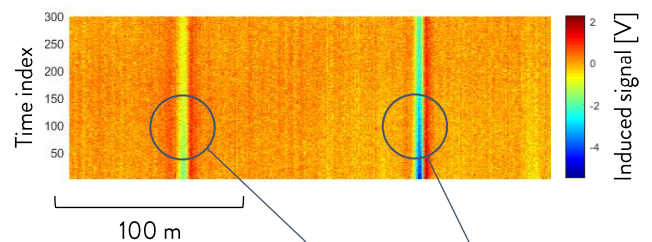


Data examples

Non-ferrous UXO: LMB mine





Telegraphic cables



Let's get in touch!

 Bâtiment Tech Iroise - Zone de Mespaul
1, rue des Ateliers
29290 SAINT-RENAN, FRANCE

 (+33) 2 98 03 23 95

 contact@mappem-geophysics.com

<https://www.mappem-geophysics.com/en/>

 Follow us on LinkedIn



MAPP
EM
GEOPHYSICS
Marine Electromagnetic Investigation